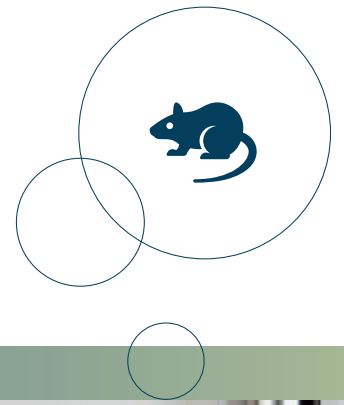


OPERATING TABLE



FLEXIBLE DESIGN

As standard the operating table is equipped with three modules according to your choice:

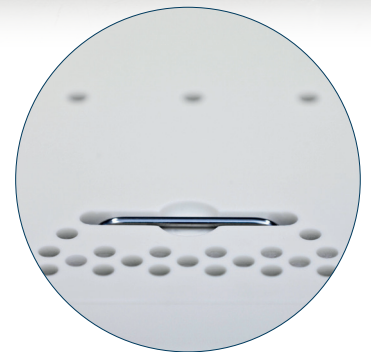
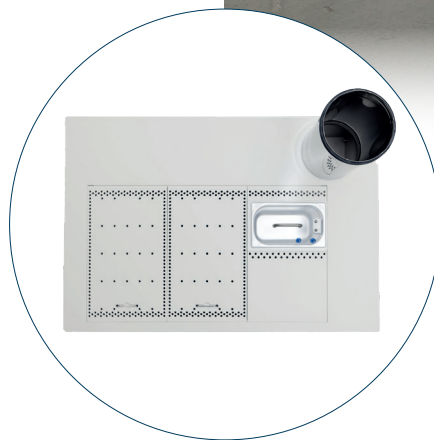
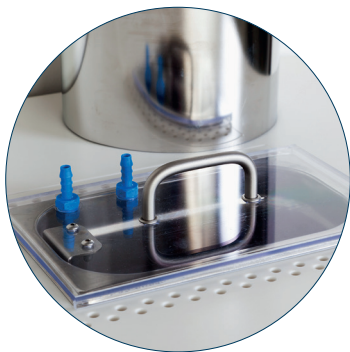
- Heated for placement of cage with animals
- Heated and down-ventilated for carrying out a procedure/operation
- With anaesthetic box and down-ventilated to ensure removal of possible spillage

PERSONNEL PROTECTION

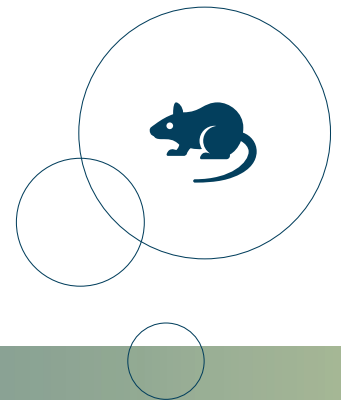
The down-ventilated modules provide optimal protection of personnel; more perforations around the edge of the module, and less in the middle where the animal is placed. To ensure an efficient removal of allergens and anaesthetic gases the extraction capacity is carefully calculated in order to obtain the best solution possible.

CORIAN® - A UNIQUE MATERIAL

Corian is a unique material, which has excellent heat distribution properties. Furthermore it has a homogenous surface, which can withstand most chemicals.



OPERATING TABLE



PRODUCT CODES

Operating table excl. modules:
41-OP

To be equipped with 3 modules in total:

Electrically heated operating table

41-OP-HEAT-EL:

Electronically heated operating table

41-COR-MOD1-EL:

Module for operating table, thermostatically controlled

41-COR-MOD2-EL:

Module for operating table, thermostatically controlled and down-ventilated

41-COR-MOD3:

Module for operating table excluding heating, including built-in anaesthetic box

Water bath heated operating table

41-OP-HEAT-WA:

Digital water bath heated operating table

41-COR-MOD1-WA:

Module for operating table, thermostatically controlled

41-COR-MOD2-WA:

Module for operating table, thermostatically controlled and down-ventilated

41-COR-MOD3:

Module for operating table excluding heating including built-in anaesthetic box

Modules for operating table excluding heating

41-COR-MOD1:

Module for operating table excluding heating

41-COR-MOD2:

Module for operating table excluding heating, down-ventilated

41-COR-MOD3:

Module for operating table excluding heating including built-in anaesthetic box

MATERIALS

Table stand: Made in polyester-coated stainless steel.

Table surface: Made in Corian®.

Trough: Made in stainless steel.

DIMENSIONS

Operating table, external dimensions: W 1100 x D 750 x H 900 mm.

Modules (one module): W 278 x D 473 mm.

TECHNICAL SPECIFICATIONS

Minimum airflow: 190 m³/h per module.

Pressure drop over table: 130 Pa.

Power: 230V.

Temperature can be regulated from room temperature to 35-50°C.

For connection to existing room exhaust system, Ø200 mm.

As standard the operating table is stationary.

OPTIONS

- 41-OP-HEIGHT-MAN:
Manual height-adjustment (H 700-1000 mm)
- 41-OP-HEIGHT-EL:
Electronic height-adjustment (H 700-1000 mm)
- 41-OP-EXH-SS:
Stainless steel exhaust pipe
- 41-OP-EXH-FLEX:
Flexible exhaust tube

WASHING/CLEANING

The Corian modules are removable and can be chemically sterilized or washed in a washing machine. The Corian surface can be cleaned by scrubbing with sponge and appropriate detergent. If the stains are very stubborn, then use fine sandpaper.

For more information about **SCANBUR** products and to contact your local product specialists, visit www.scanbur.com

info@scanbur.com