

RABBIT CAGE SYSTEM

Enriches the environment

Easy to handle

Easy to clean

**Combined shelter &
resting shelf**



BETTER CAGE SYSTEMS FOR GOOD SCIENCE

We believe that neither the laboratory animals nor the personnel should adjust to the cage systems. On the contrary, the cage system should be adjusted to meet the needs of the animals and the personnel.

The animals should be provided with a varied environment to allow them to display a wide range of natural behaviour patterns. The personnel should be provided with ergonomically designed cage systems which are easy to handle and clean.

We trust this will improve the welfare for the animals as well as for the personnel resulting in more reliable research data of benefit to both present and future generations.

This is the background for our rabbit cage systems; type EC2 (2-tier-system) and type EC3 (3-tier-system).

EASY TO HANDLE

Our rabbit cage systems are both easier to move around and to handle than 4- or 6-cage-systems. The racks are easy to connect, with two simple movements one person can connect or disconnect the racks. The side panels are easy to mount, no tools are required.

The rabbit cage insert is 110 mm high and weighs only 2.7 kg. The length of 820 mm makes the cage easy to handle, and the width of only 660 mm facilitates access to the rabbits. Furthermore access to the rabbit is facilitated by placing the combined shelter/resting shelf in vertical position (automatically locked).

EASY TO CLEAN

The rabbit cage systems are designed to be cleaned in a rack washer at temperatures up to 75°C and short rinse (max. 1 minute) up to 90°C. All plastic parts have been tested thoroughly for their washing properties. Parts in Noryl are autoclavable at 120°C.

The cage, roof and service trays as well as shelter/resting shelves, side and rear panels are removable. This allows the high pressure system of the rack washer to clean every corner of the system. The system can also be high pressure cleaned manually.

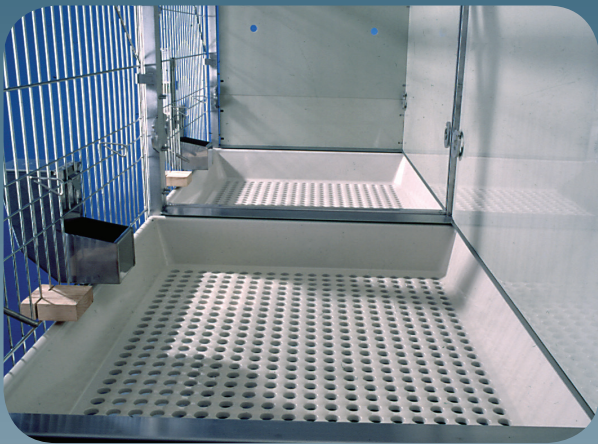
The rack is fully welded and brushed ensuring a smooth and easy-to-clean surface. Water and impurities cannot enter the steel profiles.

We have optimized the collection of urine and faeces in the service tray as follows:

- Uniform size of perforations in the cage floor
- Declining transition between the cage side and the cage floor
- Raised area between the perforations in the cage floor
- Slightly declining resting shelf
- Perforated resting shelf (option)



Large connected surface



Large floor area



Combined shelter/resting shelf

ENRICHES THE ENVIRONMENT OF THE RABBIT

The combined shelter/resting shelf (freely mounted right or left in the cage) offers the rabbit a raised area/observation post as well as a possibility of physical activity, strengthening the musculature and preventing possible degeneration of bones and muscles in the hind legs.

According to leading ethologists the rabbit believes itself hidden when it moves from a light area into a darker area through an opening. The shelter/resting shelf is therefore equipped with two openings to prevent that a dominant rabbit blocks the entrance.

The side panel is divided into two panels; a large panel (the rear wall of the shelter/resting shelf) and a small panel (the rear wall of the shelter/resting shelf). The small panel serves two important ethological functions:

- It closes the gap between two shelter/resting shelves when the racks are connected. The result is a connected surface sufficiently large to accommodate several rabbits. According to experience rabbits prefer to spend their time together on the shelter/resting shelf.
- It is possible to establish two individual shelter/resting shelves in the middle of connected racks. In this way a subordinate rabbit can avoid any visual contact with a dominant rabbit, i.e. the risk of fighting is reduced.

The large floor area available when two or more cages are connected permits the rabbit to run the full length of the connected cages. Furthermore this permits housing of rabbits in larger groups (except sexually mature male rabbits). In principle this is group housing in 2- or 3-tier-pens.

The rabbit is free to stretch in the full height of the cage (internal height of 650 mm) and in the length of the cage (820 mm). The height above the resting shelf is sufficient to allow a rabbit to jump up on the shelf without bumping its head against the roof.

The systems can optionally be equipped with a hay rack. Ethological studies show that access to hay has a very positive influence on the welfare of the rabbits.

The main part of the rabbit's environment is made of plastic to reduce the noise level. The gap in the rear wall and the perforated cage floor ensure appropriate ventilation.

CURRENT GUIDELINES

We have developed these environmentally enriched rabbit cage systems complying with current guidelines.

We have been inspired by the Swiss guidelines for housing of rabbits, which are based on ethological studies of the natural behaviour of rabbits. The Swiss guidelines differ from the current European guidelines on a number of important points: Firstly the requirement to the internal cage height and the floor area are higher. and secondly the requirement to the floor area is reduced if the cage is equipped with a raised area (resting shelf).

Our rabbit cage systems comply with both the Swiss guidelines, the European guidelines as well as the draft guidelines from The Council of Europe (Convention ETS 123):

Number of rabbits per cage	The European guidelines	The Swiss guidelines	The British guidelines
	2-6 kg = 1 rabbits	2-5 kg = 2 rabbits	2-4 kg = 1 rabbit
	< 2 kg = 2 rabbits	< 2 kg = 4 rabbits	< 2 kg = 3 rabbits



Fully welded and brushed steel construction



Floor is easy to clean



Easy connection of racks

RABBIT CAGE SYSTEM

Dimensions

TYPE EC2



DIMENSIONS

EC2 RACK

External: L 907 x W 730 x H 1839 mm.

EC2 CAGE

External: L 823 x W 660 x H 110 mm.

Internal: H 650 mm.

Floor area: 4252 cm².

Weight: 2.7 kg.

OPTIONS

- Hay rack
- Service tray made in Noryl
- Shelter/resting shelf made in Polypropylen
- Shelter/resting shelf made in Noryl (perforated)

TYPE EC3



DIMENSIONS

EC3 RACK

External: L 907 x W 730 x H 1990 mm.

EC3 CAGE

External: L 823 x W 660 x H 110 mm.

Internal: H 500 mm.

Floor area: 4252 cm².

Weight: 2.7 kg.

OPTIONS

- Hay rack
- Service tray made in Noryl
- Shelter/resting shelf made in Polypropylen

CONTACT US:

Silovej 16-18
DK-2690 Karlslunde, Denmark
Tel. +45 5686 5600
Email info-technology@scanbur.eu

SCANBUR 
Improving Life Sciences

www.scanbur.com